



ORANGE1
HOLDING

Lifting, Elevator & Building Cranes Technology

Service & Motors Production



DIE CASTING

100 ml Turnover
4 Factories
720 Headcount

ELECTRIC MOTORS

125 ml Turnover
6 Factories
800 Headcount

TURNING PARTS

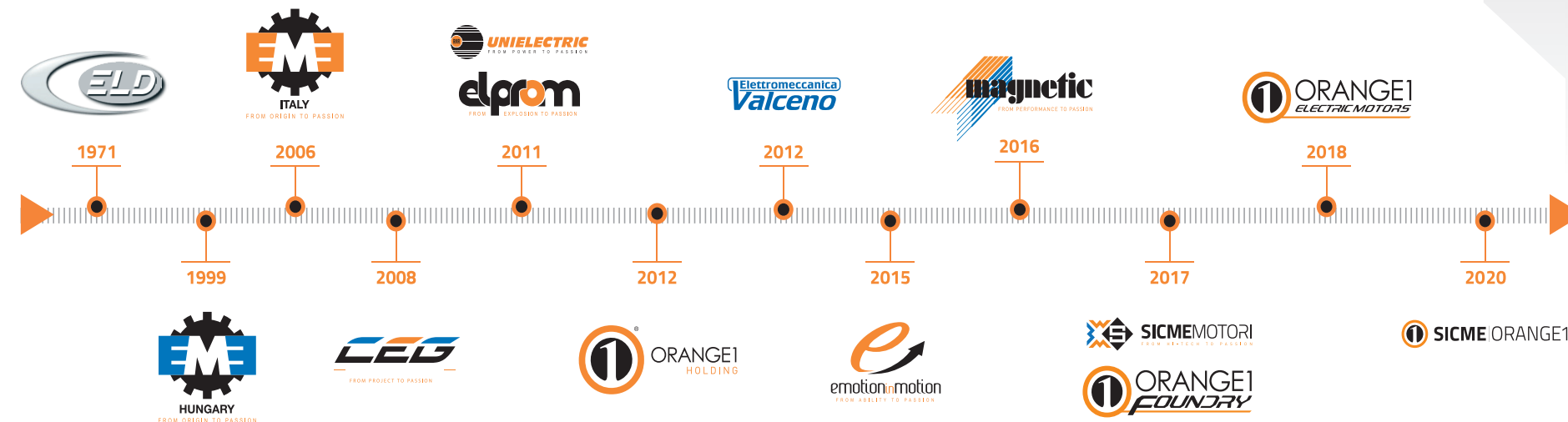
10 ml Turnover
1 Factory
80 Headcount



A dynamic, strong and ambitious Group

Orange1 Holding is an international renown Group, one of the most important European manufacturers of single-phase and three-phase asynchronous electric motors. It has an annual capacity of more than 1 million motors and 5 million electric stators with an annual turnover of approx 235 million euro and more than 1600 workers in 15 production facilities. The group, established in 1971 by Leone Donazzan, chaired today by his son Armando Donazzan, is strongly focused on technological innovation, performance and customization to meet individual clients requirements.





Orange1 Electric Motors, Magnetic and Sicme Motori, members of Orange1 Holding, created a dynamic and modern division that has developed extensive expertise in manufacturing electric motors. The experience gained in the global market, made Orange1 increase the technological know-how to manage new challenge.

ORANGE1 ELECTRIC MOTORS was born in 2018 from the merger of EME and CEG. Single-phase, three-phase asynchronous electric motors, low center motors, a wide range of highly sophisticated and innovative products to meet the customers needs and allows to build the ideal synergies for the business.

SICME ORANGE1 - Sicme Motori S.r.l., founded in 1967, produces AC motors, variable speed and high quality DC motors and it represents a benchmark of excellence for its technology providing the best economical solutions for many different applications. Since 2002 it has been cooperating actively with the Institute of Electrical Engineering of the Polytechnic of Turin and it has been one of the world's largest producers of wind generators. In 2008, it has developed motors with ASR technology, the most revolutionary type of electric machine in the world, and in 2014 developed an innovative range of synchronous reluctance motors IE4 with a specific patent.

A company with a 40 years history, well-known around the world for the high quality and product technology, it produces Asynchronous motors up to 3700 Kw, Synchronous motors up to 2700 Kw, Hydroelectric Generators up to 3000 Kw, Mini-Wind generators up to 200 Kw and Wind Turbines up to 5000 Kw. And among many other projects has developed and built the motor wheels for the Rover which landed on Mars.

Sicme Motori is also one of the European Leaders for variable speed applications, presents the serie of three-phase synchronous reluctance motors, which are designed for and can only be operated by a frequency converter (inverter).

In 2020 Sicme Motori was renamed Sicme-Orange1.

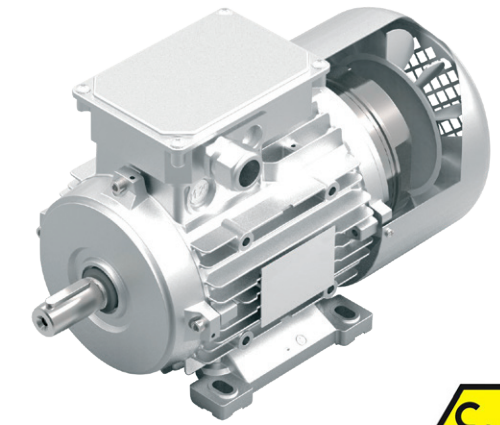




LIFTING SYSTEM

Orange1 has developed the best solutions in collaboration with leading international companies of lifting systems and can supply complete custom made solutions to automate applications efficiently.

A complete range of electrical products and motors for lifting technology: slewing drive gearmotors for tower cranes and concrete pumps, winch gearmotors for lifting and driving mobile cranes, suspended working platforms and bridges, hoists.

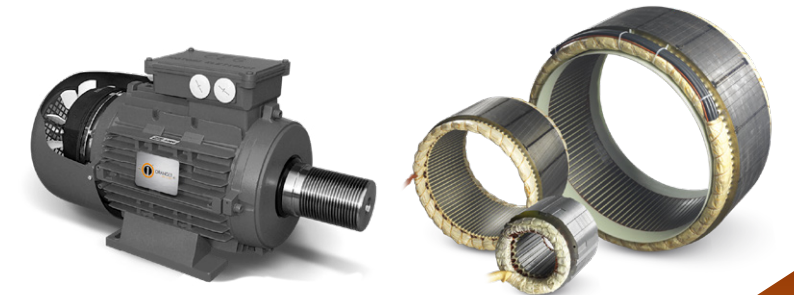


Also available:  

ELEVATOR TECHNOLOGY

The technological evolution of the lift market has led to design motors that are even more specific, completely different from those ones commonly used in the Industry, both for the electrical characteristics (see for example the management of torque and inrush currents), and for the mechanical construction, ensuring quietness, safety and sustainability of installations, even for civil use.

Starting from the technical specifications of the customer and / or in co-engineering, from prototyping to the industrialization of the product, we provide special motors systems for modern elevators/escalators along with experience and high professional skills for managing complex projects. We choose the most appropriate materials, components and processes in order to achieve top quality and performance.



Motor Production

The production includes DC and AC motors

- AC Asynchronous motors from 1,5 kW to 1900 kW;
- Synchronous motors from 11 kW to 500 kW;
- DC motors from 1 kW to 2400 kW.

Productivity

- Crane hook movement controlled over a wide speed range, depending on the load;
- Very high overload capability;
- Motors integrated with parking or emergency brakes, protection system designed for building environment, high dynamic performances.

Safety

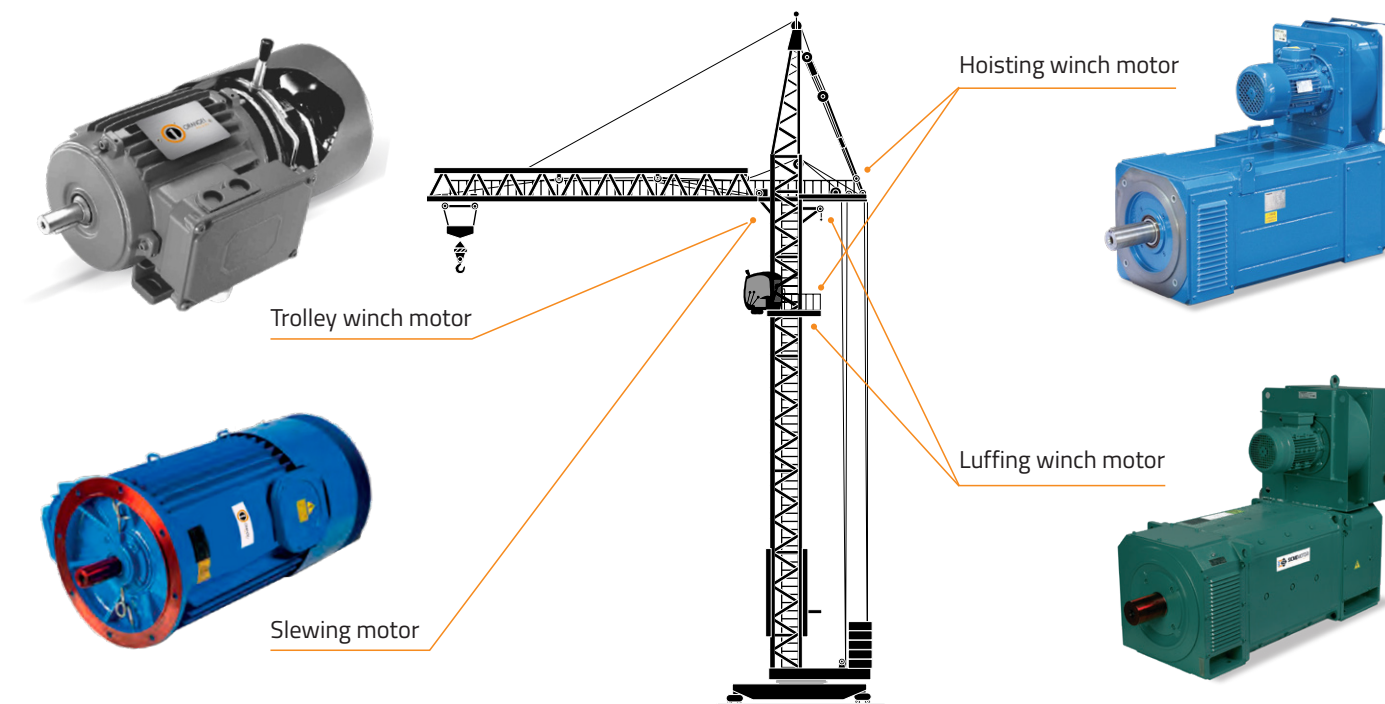
- Range of parking and emergency brakes for static hold or dynamic stop with manual brake release;
- Sensors for temperature control of windings and bearings;
- Devices for control of cooling air fluxes;
- Devices for speed control.

Reliability

- Excellent electrical and mechanical duration in consideration of the peculiar working environments;
- High performance bearing unit supplied by leading suppliers, high precision mechanical control of couplings;
- Use of specific copper for inverter supply and vacuum pressure impregnation with specific resin;
- External painting treatment and specific components for application in harsh environments.



BUILDING CRANES TECHNOLOGY





Orange1 Service

Orange1 quality and technical team, together with a dedicated internal department, offers a full service system able to satisfy any specific request into electric motor maintenance. Orange1 Service can provide an innovative diagnostic tools for electrical testing and analysis to pinpoint immediately specific motor issues. For this purpose an equipped in-house testing room is available, in order to handle tests, inspections and issue detailed test report for each motor. The guarantee of a repaired motor is 6 months.

A prompt customer service is available to provide advices, assistance and the best solutions both in case of damage and in case of optimization of the existing motorization. Thanks to our worldwide supply experience, the combination of know-how and specialization is mainly dedicated to lifting and cranes for both the building sector and port and shipping industry.

To prevent unscheduled and extra maintenance costs, Orange1 Service provides also a smooth and efficient scheduled maintenance plan.



ENTER ORANGE1 WORLD
and join our passion for technology



Orange1 Holding
info@orange1.eu
www.orange1.eu

follow us   

